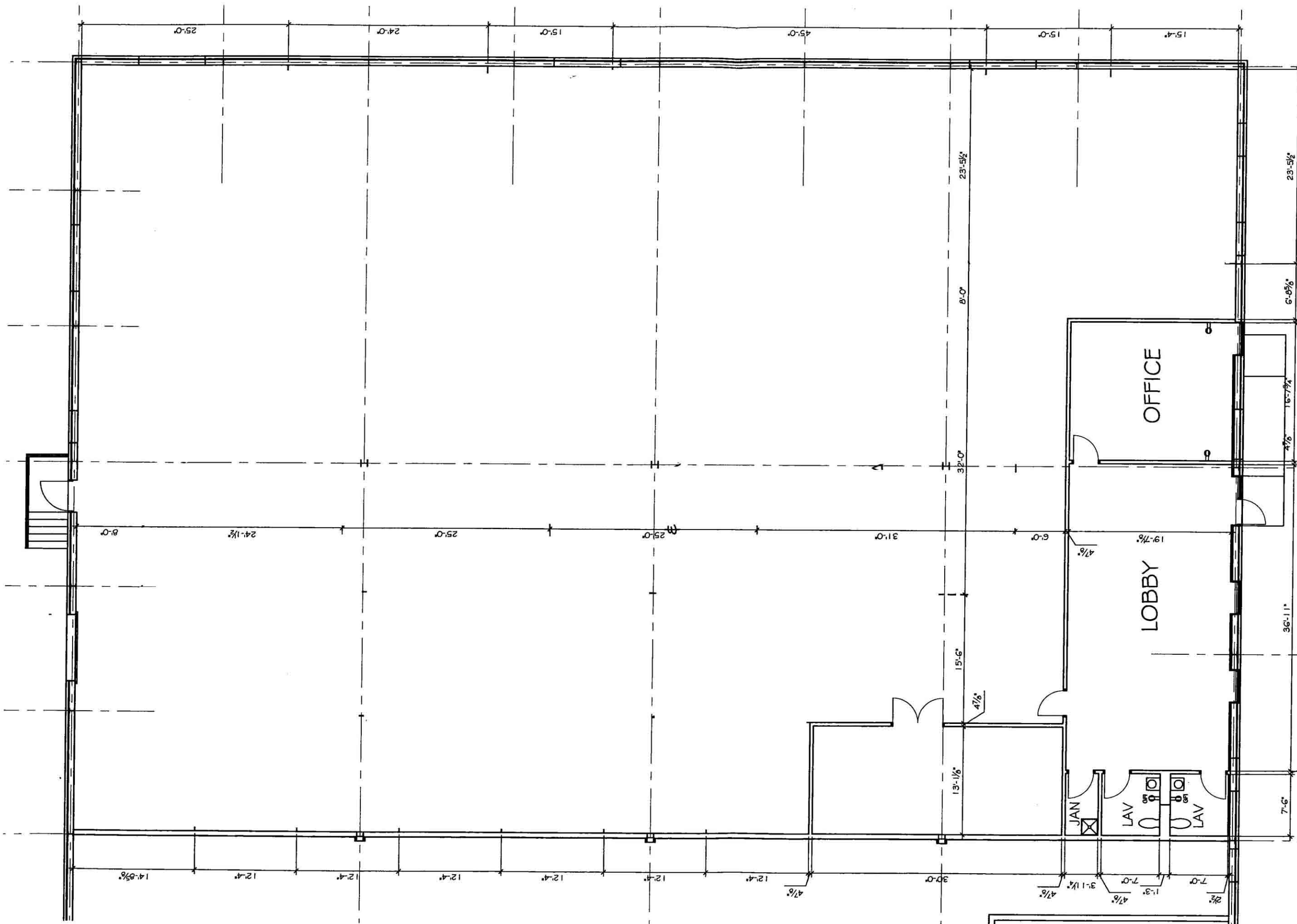


CALLED
NORTH

OFFICE + WAREHOUSE
BUILDING
115 Shawmut Road
Canton, MA

Client:
AMS REALTY TRUST - Canton, Massachusetts



DATES:

8 FEBRUARY 2010 REVIEW
13 FEBRUARY 2010 REVISED - COMPLETE
17 AUGUST 2010 ASB PLAN DOC

RICHARD ALVORD ARCHITECTS
20 Cummins Highway
Roslindale Massachusetts 02131
(617) 325 3216 (F) 617 325 3218

The Date to this Document incorporates proprietary rights of Richard Alvord Architects, 20 Cummins Highway, Roslindale, Massachusetts 02131. Any party copying these documents does so in confidence and agrees that it shall not be disclosed, in whole or in part, nor obtained in whole, without the written consent of Richard Alvord Architects.
Contractor shall verify all conditions on site and notify project architect of any variations from boundaries shown on these drawings before proceeding with any construction.

FIRST FLOOR PLAN

Scale: 3/32" = 1'-0"

SKA1.1